

2

3

4

5

6

7

REVISION DATA		
REV	DESCRIPTION	DATE
A0	NEW DRAWING	16-5-3

Technical Data

Material:

Pin(outer sleeve): Brass, machined CuZn38Pb2

Plating(outer sleeve):

Tin Plated: 2µm/80µm"Ni, 5µm/200µ"Sn

Gold Plated: 2µm"/80µm"Ni, 0.8µ" gold

Insulator: PPS UL94V-0

Mating pin∅: 0.50mm

Electrical:

Current rating: 3Amps/contact max.

Contact resistance: ≤ 4mΩ/contact

Insulation resistance: ≥ 1000MΩ at V=100V

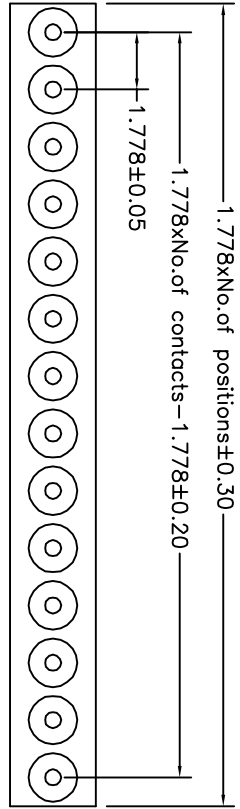
Operating voltage: 60VAC/DC

Mechanical:

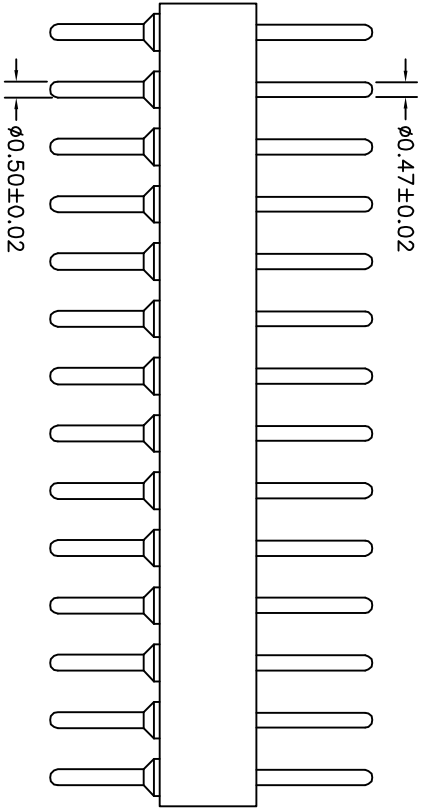
Mechanical life: min 500 cycle

Operating temperature: -40 ° C to +105 ° C

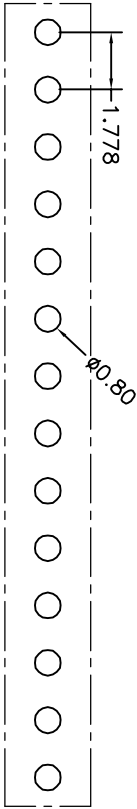
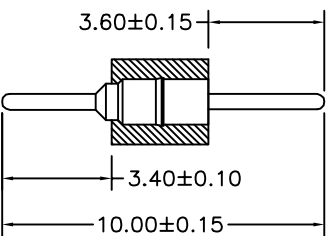
Soldering temperature: +255 ° C



2.65±0.10



3.00±0.10



P. C. B LAYOUT

QZT	X	X	-	X	XX	XX	XXXX	X
Pitch(mm)	A=1.27	B=1.778	C=2.00	D=2.54	Insulator Type code	1=Single row	2=Double row	3=Three row
Angel Options	D=180°	R=90°	S=SMT	I=IC	No. of Positions	XX positions	Pin plated	T1=Tin 150u" T2=Tin 200u" G1=G/F G2=Gold 3u" G3=Gold 10u" G4=Gold 15u" G5=Gold 30u"
Pin Length Options	1000=10.00mm	Specifications	A=Public seat	B=Female seat	Pin plated	T1=Tin 150u" T2=Tin 200u" G1=G/F G2=Gold 3u" G3=Gold 10u" G4=Gold 15u" G5=Gold 30u"	Pin Length Options	1000=10.00mm

QZTconn 启之泰 东莞市启之泰电子科技有限公司

TOLERANCE	PROJECTION	TITLE:
X. XXX ±0.05	DATE: 2016-5-3	Single row socket connector 1.778mm L=10.0mm 常规型
X. XX ±0.15	TANG-S-G	PART NO: QZT1B1-DXXXX1000A
X. X ±0.20	CHECKED:	DRAWING NO: 2016050307
X. ±0.30	APPROVED:	REV: A0 UNIT: mm SCALE: FULL SIZE: A4
ANGLE ±5.0°		