

Technical Data

Materlal:

Pin(outer sleeve):Brass,machined CuZn38Pb2

Plating(outer sleeve):

Tin Plated:2μm/80μm"NI, 5μm/200μ"Sn

Gold Plated:2μm"/80μm"Ni, 0. 8μ" gold

Plating(Contact):2μm/80μ"NI,gold or Tin plated

Insuiator:PPS UL94V-0

ClIp(Contact 4 Flnger):Beryllium copper,heat teated

Electrical:

Current rating:3Amps/contact max.

Contact resistance:≤4mΩ/contact

Insuiation resistance:≥1000MΩ at V=100V

Operaing vottage:60VAC/DC

Mechanical:

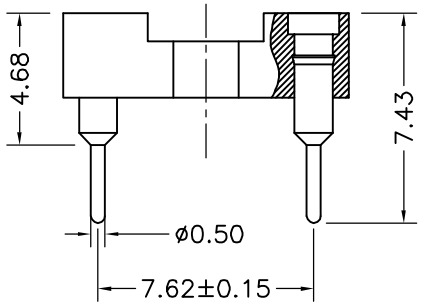
Average Insertion force with steel pin of ø0.432:<250g

Average withdrawal force with steel pin of ø0.432:>70g

Mechanical lige cycle:min 200

Operaling temperature:-40° C to+105° C

Soldering temperature:+255° C



qztconn
启之泰

QZT	X	X	X	XX	XX	XX	XXXX	X
Pitch(mm) A=1.27 B=1.778 C=2.00 D=2.54	Dip spcing 0= No 1=1.27mm 2=2.54mm 3=7.62mm 4=10.16mm 5=15.24mm	Angel Options D=180° R=90° S=SMT I1=IC-180度 I2=IC-90度 I3=IC-SMT	No. of Positions XX positions	Pin plated T1=Tin 150u" T2=Tin 200u" G1=G/F G2=Gold 3u" G3=Gold 10u" G4=Gold 15u" G5=Gold 30u"	CLIP plated T1=Tin 150u" T2=Tin 200u" G1=G/F G2=Gold 3u" G3=Gold 10u" G4=Gold 15u" G5=Gold 30u"	Pin Length Options 0743=7.43mm	Specifications A=Public seat B=Female seat	