

**Technical Data**

Material:

Pin(outer sleeve):Brass,machined CuZn38Pb2

Plating(outer sleeve):

Tin Plated:2μm/80μm<sup>NI</sup>,5μm/200μ<sup>Sn</sup>

Gold Plated:2μm<sup>NI</sup>/80μm<sup>NI</sup>,0.8μ<sup>gold</sup>

Plating(Contact ):2μm/80μm<sup>NI</sup>,gold or Tin plated

Insuiator:PPS UL94V-0

ClIp(Contact 4 Flnger):Beryllium copper,heat teated

Electrical:

Current rating:3Amps/contact max.

Contact resistance:≤4mΩ/contact

Insuiation resistance:≥1000MΩ at V=100V

Operaing voitage:60VAC/DC

Mechanical:

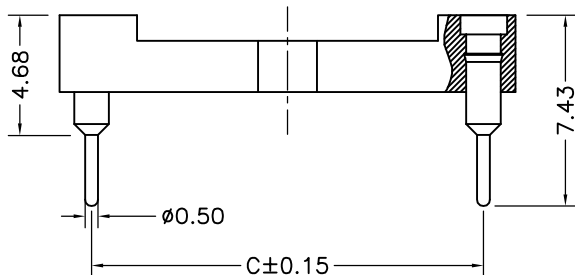
Average Insertion force with steel pin of ∅0.432:<250g

Average withdrawal force with steel pin of ∅0.432:>70g

Mechanical lige cycle:min 200

Operaling temperature:-40° C to+105° C

Soldering temperature:+255° C



Serial number	No. of Positions	PART NO	A	B	C	D
17	24	QZTD5-I124XXX0743B	30.48	27.94	15.24	17.7
18	28	QZTD5-I128XXX0743B	35.56	33.02	15.24	17.7
19	32	QZTD5-I132XXX0743B	40.64	38.1	15.24	17.7
20	36	QZTD5-I136XXX0743B	45.72	43.18	15.24	17.7
21	40	QZTD5-I140XXX0743B	50.8	48.26	15.24	17.7
22	42	QZTD5-I142XXX0743B	53.34	50.8	15.24	17.7
23	48	QZTD5-I148XXX0743B	60.96	58.42	15.24	17.7
24	50	QZTD5-I150XXX0743B	63.5	60.96	15.24	17.7
25	52	QZTD5-I152XXX0743B	66.04	63.5	15.24	17.7

**qztconn**  
启之泰

QZT	X	X	X	XX	XX	XX	XXXX	X
Pitch(mm) A=1.27 B=1.778 C=2.00 D=2.54	Dip spcing 0= No 1=1.27mm 2=2.54mm 3=7.62mm 4=10.16mm 5=15.24mm	Angel Options D=180° R=90° S=SMT I1=IC-180度 I2=IC-90度 I3=IC-SMT	No. of Positions XX positions	Pin plated T1=Tin 150u" T2=Tin 200u" G1=G/F G2=Gold 3u" G3=Gold 10u" G4=Gold 15u" G5=Gold 30u"	CLIP plated T1=Tin 150u" T2=Tin 200u" G1=G/F G2=Gold 3u" G3=Gold 10u" G4=Gold 15u" G5=Gold 30u"	Pin Length Options 0743=7.43mm	Specifications A=Public seat B=Female seat	